

HELIXA TP PRODUCT LINE

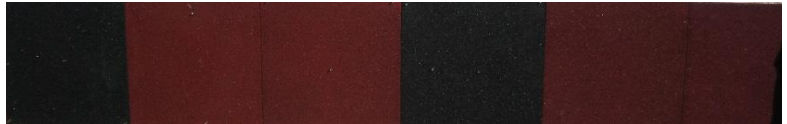
PRODUCT DATA SHEET – HELIXA TP® WALL PROTECTOR BOARD

I. CHARACTERISTICS

Moulded compact rubber made of black SBR aggregates and a coloured polyurethane resin.

II. COLOURS

Red – Black



III. DIMENSIONS

Length: 1 500 mm – Width: 500 mm made of 500 mm x 500 mm boards
Thickness: 25 mm
Kit with 2 red boards and 1 black board + 2 cartridges of HIGH TACK glue

IV. USE

Dense rubber wall protection
Fixation with glue for underground parking lots, hotel car parks, garage, production line in industrial environment, etc.

V. MAINTENANCE

Due to their conception, the “WALL PROTECTOR” rubber boards enable lower care costs. They can simply be washed (3 bar max.) or swept with a soft scrubbing brush. You can also use our bactericidal cleaner: Cleandalle FC. Wait 72 hours after gluing before the first cleaning. Make sure to never use a solvent product to clean the rubber boards.

VI. ADVANTAGES

- Absorbs shocks without restoring the strength of impact
- Rubber material installed with no screws
- Water and frost resistant
- Installed on any plain or vertical material
- Interchangeable
- Recyclable



Models, drawings and names are registered. No copy or reprography is permitted without prior written authorization.
This manual was reviewed in February 2016 and may be updated; please make sure this is the latest version.

FRANCE CONSTRUCTION Sols Sportifs et Techniques
ZAC des Bousquets – 165 rue de l'Initiative – F-83390 CUERS
TEL.: +33 (0)4 94 14 91 91 – FAX.: +33 (0)4 94 14 93 93
WEBSITE: www.hexdalle.com - E-MAIL: contact@hexdalle.com

VII. STORAGE

Storage temperature between 15 and 25 °C

Avoid partial exposure of the boards to U.V.

Before installing, unpack the boards on a plain surface for them to recover their original characteristics.

VIII. CONDITIONNING

According to your needs: 1500mm length pieces

DISPOSABLE PALLETS: 1000x1200 mm or 800 x 12000 mm

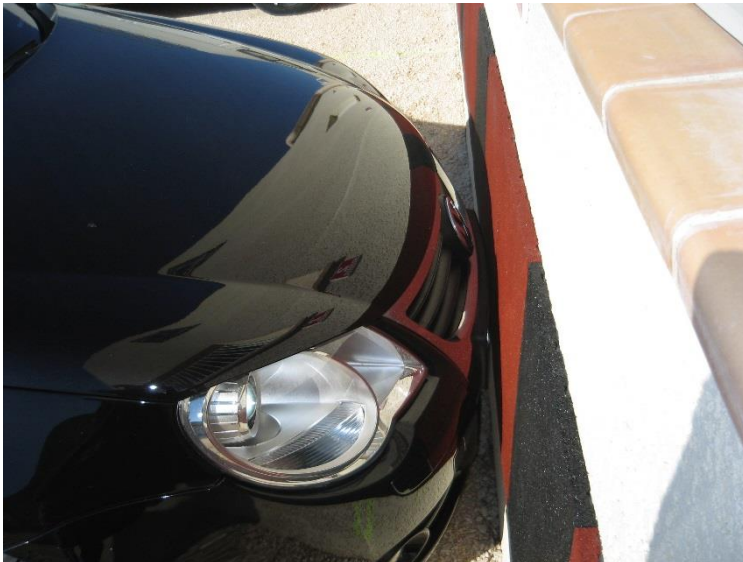
PACKAGING: We pay particular attention to the packaging in order to avoid any problems that may occur during the transport. In order to preserve your rights and interests, we ask you to check the items as soon as you receive them.

The items are packed in a white stretchable film and a warranty scotch bearing the "France Construction" name.

4 pieces of cardboard protect the angles during shipping and 2 plastic straps hold all the merchandise together.

Minimum 1 KIT per pallet

Maximum of 89 kits per pallet



IX. LAYING INSTRUCTIONS

Please check our laying instructions before installation

Models, drawings and names are registered. No copy or reprography is permitted without prior written authorization.

This manual was reviewed in February 2016 and may be updated; please make sure this is the latest version.

FRANCE CONSTRUCTION Sols Sportifs et Techniques

ZAC des Bousquets – 165 rue de l'Initiative – F-83390 CUERS

TEL.: +33 (0)4 94 14 91 91 – FAX.: +33 (0)4 94 14 93 93

WEBSITE: www.hexdalle.com - E-MAIL: contact@hexdalle.com

Page 2 out of 2